

DSQ-B SERIES - BELT DRIVE INLINE BLOWERS

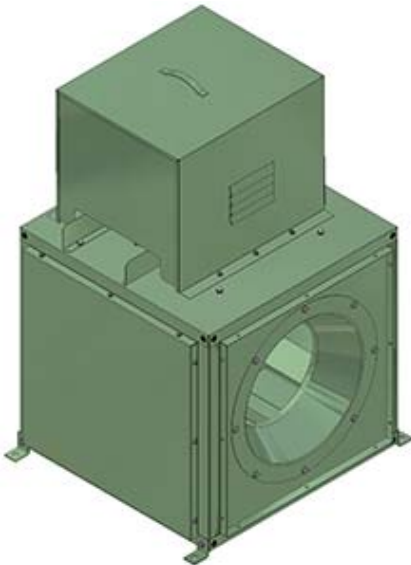
OPERATION INSTRUCTIONS AND PARTS MANUAL

MODELS: DSQ-B-10, DSQ-B-12, DSQ-B-13, DSQ-B-15, DSQB-16, DSQ-B-18, DSQ-B-20, DSQ-B-22, DSQ-B-24 AND DSQ-B-27

General Safety

Rotating parts, (pulleys, shafts and belts) on fans should not be exposed. Where these components are not protected by ductwork, cabinets or covers, appropriate guards should be employed to restrict exposure to rotating parts. Access doors should not be opened with the fan operating to avoid foreign objects being drawn into the system. On initial start-up a careful inspection should be carried out to ensure no foreign material is present which could become airborne in the system.

Read installation and operation instructions carefully before attempting to install, operate or service Delhi DSQ-B Series Blowers. Failure to comply with instructions could result in personal injury and/or property damage. Retain instructions for future reference.



Model	Max. H.P.	Shaft Dia.	Unit Weight
DSQ-B-10	1	3/4"	62
DSQ-B-12	1-1/2	3/4"	73
DSQ-B-13	1-1/2	3/4"	85
DSQ-B-15	2	3/4"	95
DSQ-B-16	3	3/4"	123
DSQ-B-18	3	1"	140
DSQ-B-20	3	1"	165
DSQ-B-22	5	1"	211
DSQ-B-24	7-1/2	1-3/16"	241
DSQ-B-27	7-1/2	1-3/16"	280

General

Inspect unit for damage, report any shipping damage to carrier. Check all fasteners, re-tighten as required. Rotate the blower wheel by hand to ensure free rotation. If rubbing occurs, loosen the inlet venturi bolts, re-position the venturi to establish clearance, re-tighten bolts.

Installation (Fig. 1)

The 4 angle brackets provided allow for base or suspension mounting

Suspension Mounting

For suspension mounting, move the 4 angle iron mounting brackets to the four upper corners (front and rear or both sides) using the hardware provided, secure the unit to 4 customer provided suspension rods.

Base Mounting

For base mounting, 4 angle iron mounting brackets are supplied in the 4 lower corners (front and rear or both sides) secure these to the customer supplied base.

Vibration Isolation (not included).

Recommended (spring or rubber) for both suspension or base mount.

Suspension Mount

Install 4 supplied angle iron mounting brackets on upper cabinet front & rear or sides (illustrated)



Fig. 1

Base Mount

4 angle iron mounting brackets are supplied on the cabinet bottom front & rear (illustrated),

Motor, Pulleys & Belts

1. Select the appropriate drive set (motor, pulleys, and belts) from the drive table (page 3) or Delhi's 'Delair' blower selection program to obtain the blower RPM that will deliver the design performance (CFM & SP).
2. Remove the access panel from the drive compartment to expose the blower shaft. Mount the blower pulley on the shaft end and tighten the setscrew securely.
3. Remove the motor compartment cover to expose the motor mounting platform. Secure the motor to the platform, mount the adjustable motor pulley to the shaft end, align with the blower pulley using a straight edge (see Fig. 2) and tighten the setscrew to secure the pulley to the motor shaft.
4. Install the belt(s) and raise the end of the pivoting motor platform to tension the belt and secure the platform in place with the positioning screws located on both sides of the platform.

DO NOT OVER TENSION

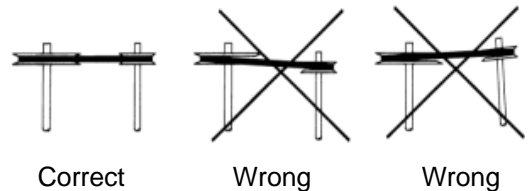
Belt Tension & Alignment - Fig. 2

Warning

EXCESSIVE BELT TENSION IS THE MOST FREQUENT CAUSE OF BEARING WEAR AND RESULTING NOISE PROPER BELT TENSION IS CRITICAL FOR QUIET EFFICIENT OPERATION

Ideal belt tension is the lowest value under which belt slip will not occur at peak load conditions

Belt Alignment



Electrical

Warning: Ensure power supply is disconnected & locked out prior to making electrical connections.

Before connecting the motor to the electrical supply, check the electrical characteristics and wiring instructions as indicated on the motor nameplate or inside the conduit box cover to ensure proper voltage and phase. Complete electrical connections as indicated.

Warning: A ground wire must be connected from the motor housing to a suitable electrical ground.

Operation

1. Complete the electrical connections, energize the unit momentarily and ensure proper wheel rotation.
2. Apply full power.
3. With all ducts attached, the access doors in place and the air system in full operation, measure the motor current and ensure that it is less than the rated full load motor amperage as indicated on the motor nameplate.

Maintenance

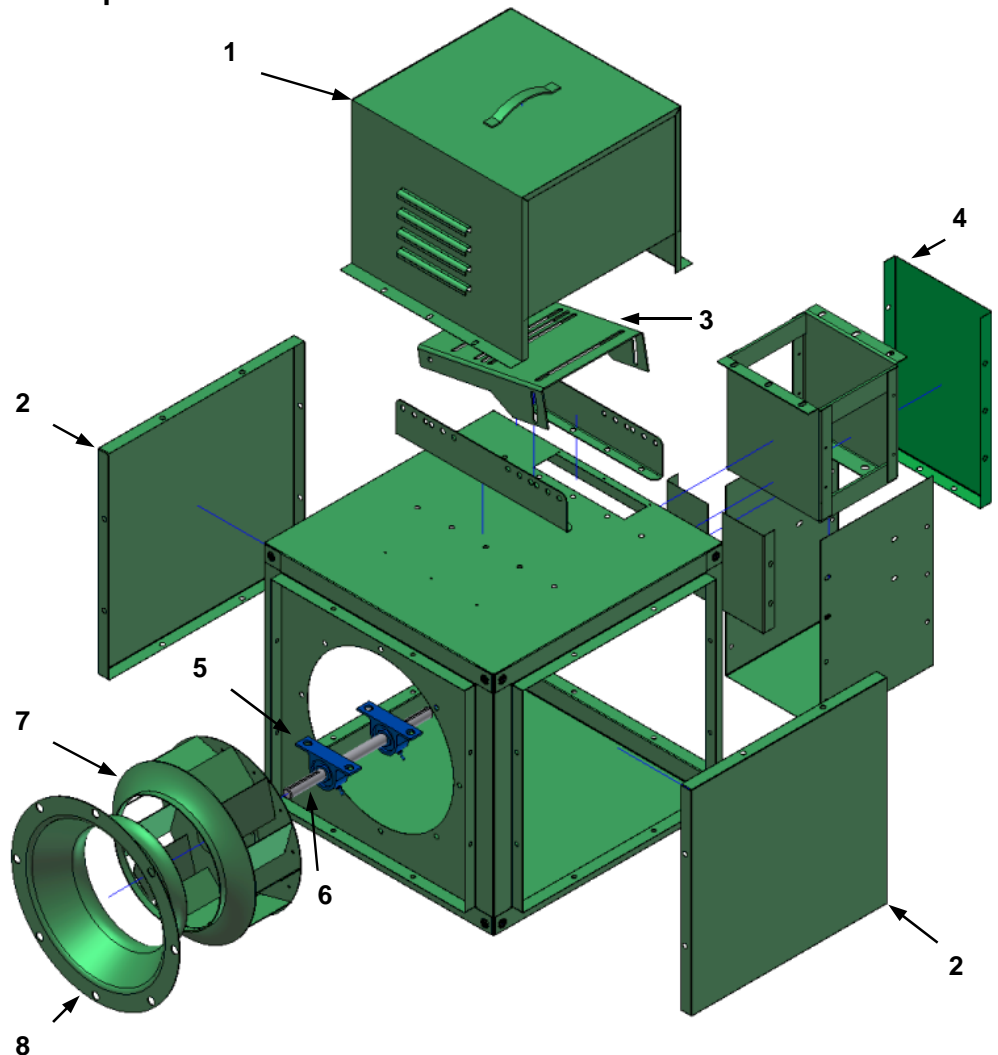
Ensure power supply is disconnected & locked out prior to performing maintenance.

1. Inspect and tighten all bearing and wheel set screws after the first 50 to 100 hours of operation and periodically thereafter.
2. Follow motor manufacturer's instructions for motor lubrication. Remove any excess lubrication.
3. Drives: A - Check belt tension and alignment, replace cracked or worn belts. If it is necessary to replace one belt on a multiple belt drive, replace all the belts with a matched set.
B - Under normal conditions, no re-lubrication is the rule. The bearing lubricant cavity is 1/3-1/2 filled as shipped from the factory. Never lubricate new bearings.
4. Clean the blower wheel periodically. Material build up on the blades can cause wheel imbalance which may result in wheel or bearing failure.

DSQ-B Series Replacement Parts / Exploded View

Parts List

- 1 Motor Cover
- 2 Side Access Panel
- 3 Motor Mounting Platform
- 4 Drive Compartment Access Cover
- 5 Bearings
- 6 Shaft
- 7 Wheel
- 8 Inlet Venturi



Warranty

Delhi Industries Inc, Air Moving Products are guaranteed for a period of one year against manufacturing defects in material and workmanship when operating under normal conditions. Liability is limited to the replacement of defective parts. Labour and transportation costs are not included.

Delhi Industries Inc.
523 James Street
Delhi, Ontario
Canada N4B 2Z3

Tel: (519) 582-2440
Fax . (519) 582-0581
www.delhi-industries.com